

INCA

CONTROL PTY LTD

14/62 OWEN ST GLENDENNING NSW 2761

A.B.N 54 131 353 636

Phone: (02) 96753815

Fax: (02) 96751381

Email: sales@incacontrol.com.au

FULL PRODUCT LIST

1.10.2010

INCA

CONTROL PTY LTD

14/62 OWEN ST GLENDENNING NSW 2761

A.B.N 54 131 353 636

Phone: (02) 96753815

Fax: (02) 96751381

Email: sales@incacontrol.com.au

Design & Manufacture of: Custom-built Switchboards, Electronic Control Equipment, AC/DC Pumping Controls, Installation & Services

Inca Control Pty Ltd is a family owned and operated business in the western suburbs of Sydney. We have been designing & manufacturing control panels for over 40 years for the Industrial & Commercial fields. From the small single & dual pumping control panels to the larger custom built cabinets incorporating PLC control.

We have been involved heavily in the pumping field, supplying control panels for car park drainage, water pressure systems including variable speed drive, water booster or transfer systems and fire pump controls to AS2941 for both diesel & electric pumps. All these above systems incorporate level, pressure & all associated control measuring devices.

Other fields that we are involved in are dust fan extraction controls, nursery industry bagging machines, water feature controls including human interface water features, pumping stations for water supply, etc.

Our control systems can incorporate simple relay & timer logic for the smaller low cost projects, moving up to complex PLC controllers with touch screen operation. Radio telemetry communication control replacing long runs of hard wiring has become a growing part of our control system, using unlicensed low cost reliable equipment that operates within buildings or long distances in the open.

We specialise in custom building control panels to your requirements in 1-offs or large number offs and want to provide you, the customer, with the product & service you are expecting.

INCA

CONTROL PTY LTD

14/62 OWEN ST GLENDENNING NSW 2761

A.B.N 54 131 353 636

Phone: (02) 96753815

Fax: (02) 96751381

Email: sales@incacontrol.com.au

HLA High Level Alarm Panel

Our High Level alarm control panel is for the monitoring of High level within the pit. It can be supplied with or without compliance with class 1 zone 2 requirements & the pump is powered via terminals within the panel. The panel is standard with: -

- Circuit breaker for isolator/control
- High level light
- Audible alarm (-1) Audi alarm & mute button (-2)
- Terminals for 240V up to 1.1kW pump
- All housed in a PVC weatherproof enclosure
- Labelling on front door
- 1 metre lead & 3 pin plug for power supply
- Float switch our supply (-3 & -4) (Note: Float is not Class1 Zone 2)



HLA-F High Level Alarm Panel

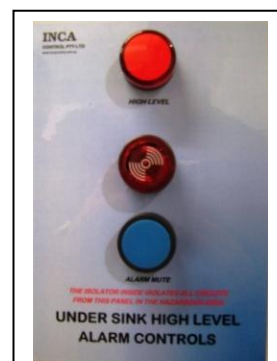
Our alternative High Level alarm control panel is for the monitoring of High level within the pit. It **does not** comply with class 1 zone 2 (Float switch our supply) & the pump is powered separately to the panel. A float switch is supplied pre connected to the panel. The panel is standard with: -

- Circuit breaker for isolator/control
- High level light
- Audible alarm & mute button
- All housed in a PVC weatherproof enclosure
- Labelling on front door
- 1 metre lead & 3 pin plug for power supply
- High level float switch connected to panel in either 5 or 10 metre length

UND Under Sink High Level Alarm Panel

Our Under sink High Level alarm control panel is for the monitoring of High level within an under sink tub drain. It has controls to operate a 240V shutdown solenoid at high level, the panel is standard with: -

- Circuit breaker for isolator/control
- High level light
- Audible alarm & mute button
- Controls to shutdown mains water solenoid on high level (240V solenoid your supply)
- Alternative to also shutdown dishwasher
- Alternative Dishwasher 10A GPO on front door
- All housed in a PVC weatherproof enclosure
- Wired in our workshop including supply of high level float switch
- 1 metre lead & 3 pin plug for power supply



HLA (High level alarm Panel) - PVC

| Part No | Description | Price + GST |
|--|--|--------------------|
| High Level Alarm | | |
| HLA-1 | High Level Alarm (No mute) | |
| HLA-2 | High Level Alarm Audi & mute | |
| HLA-3 | High level Alarm (HLA-1 including 10metre float switch) | |
| HLA-4 | High Level alarm (HLA-2 including 10metre float switch) | |
| High Level Alarm (Not Class 1 Zone 2) | | |
| HLA-F10-240v | High Level Alarm (Including 10metre Float switch) - 240v | |
| HLA-F10-24v | High Level Alarm (Including 10metre Float switch) – 24v | |

Under Sink (High level alarm Panel) - PVC

| Part No | Description | Price + GST |
|-------------------------|---|--------------------|
| High Level Alarm | | |
| UND-HL-AM | Under sink high level alarm c/w mute & solenoid shutdown, wire pump, solenoid (Your supply) & Inca supplied float with 3metre lead | |
| UND-HL-AM-D | Under sink high level alarm c/w mute Dishwasher GPO & solenoid shutdown, wire pump, solenoid (your supply) & Inca supplied float with 3metre lead | |
| UND-N/C-SOL20 | Under sink N/C Solenoid 20mm | |

INCA

CONTROL PTY LTD

14/62 OWEN ST GLENDENNING NSW 2761

A.B.N 54 131 353 636

Phone: (02) 9675 3815

Fax: (02) 9675 1381

Email: sales@incacontrol.com.au

SP1 Single Pump Out control panel

Our standard model single pump out control panel for 3phase up to 7.5kW 415V & single phase up to 1.5kW 240V (larger on request). The panels are standard with: -

- Circuit breakers for pump/isolator & control circuit
- Manual/off/auto selector switch
- Main isolating switch c/w 2nd pole (240V) or 4th pole (415V) for class 1 zone 2 hazardous location
- All housed in a PVC weatherproof enclosure.

Part No's

| <u>Type</u> | <u>No of Pumps</u> | <u>Phase 240V or 415V</u> | <u>Pump motor kW</u> | <u>(Advise Type of System)</u> |
|-------------|--------------------|---------------------------|----------------------|--------------------------------|
| SP etc) | 1 - | 1 or 3 / | To be Listed | (Sump, Sewage, Stormwater, |

A single 415V 2.2kW Sub Soil Panel would be SP1-3/2.2 (Sub Soil)

Alternative with Lights & High Level Audi alarm & mute

The panels are standard with: -

- Circuit breakers for pump/isolator & control circuit
- Manual/off/auto selector switch
- Main isolating switch c/w 2nd pole (240V) or 4th pole (415V) for class 1 zone 2 hazardous location
- Indicating lights for

| | |
|------------|---------|
| Power on | (1-off) |
| Pump run | (1-off) |
| Pump fail | (1-off) |
| High level | (1-off) |
- High level audible alarm & mute
- All housed in a PVC weatherproof enclosure.

Part No's

| <u>Type</u> | <u>No of Pumps</u> | <u>Phase</u> | <u>Pump motor kW</u> | <u>High level</u> | <u>(Advise Type of System)</u> |
|-------------|--------------------|----------------------|----------------------|-------------------|--------------------------------|
| SP | 1 - | 1 or 3 /To be Listed | -SO3 | | (Sump, Sewage, Stormwater etc) |

SP1 (Single Pump out Controls)

| Part No | Description | Price + GST |
|----------------|--------------------|--------------------|
|----------------|--------------------|--------------------|

Single 1phase 240V pumps

| | | |
|-----------|-----------------------------|--|
| SP1-1/1.5 | Single 240V 1ph up to 1.5kW | |
|-----------|-----------------------------|--|

Single 3phase 415V pumps

| | | |
|-----------|-----------------------------|--|
| SP1-3/4 | Single 415V 3ph up to 4kW | |
| SP1-3/7.5 | Single 415V 3ph 4 to 7.5kW | |
| SP1-3/11 | Single 415V 3ph 7.5 to 11kW | |

SP1 (Single Pump out Controls with Lights & Audi & Mute)

| Part No | Description | Price + GST |
|----------------|--------------------|--------------------|
|----------------|--------------------|--------------------|

Single 1phase 240V pumps

| | | |
|---------------|-----------------------------|--|
| SP1-1/1.5-SO3 | Single 240V 1ph up to 1.5kW | |
|---------------|-----------------------------|--|

Single 3phase 415V pumps

| | | |
|---------------|-----------------------------|--|
| SP1-3/4-SO3 | Single 415V 3ph up to 4kW | |
| SP1-3/7.5-SO3 | Single 415V 3ph 4 to 7.5kW | |
| SP1-3/11-SO3 | Single 415V 3ph 7.5 to 11kW | |

Optional Extras

| | | Price + GST |
|-------|---|--------------------|
| VFC1 | Volt free contacts for pump run/each pump fail/High Level | |
| WPMB | Panel fitted inside weatherproof & vandal proof meter box | |
| RFL | Flashing light on panel roof | |
| RFL-L | Loose supply Red flashing light | |
| HRM | Hour run meters for each pump | |
| LLR | Low level alarm & pump shutdown | |
| FS-10 | PVC Float switch with 10metre lead (NON Hazardous) | |
| FS-20 | PVC Float switch with 20metre lead (NON Hazardous) | |
| MBK | SS Mounting Bracket (Pack 4) | |

INCA

CONTROL PTY LTD

14/62 OWEN ST GLENDENNING NSW 2761

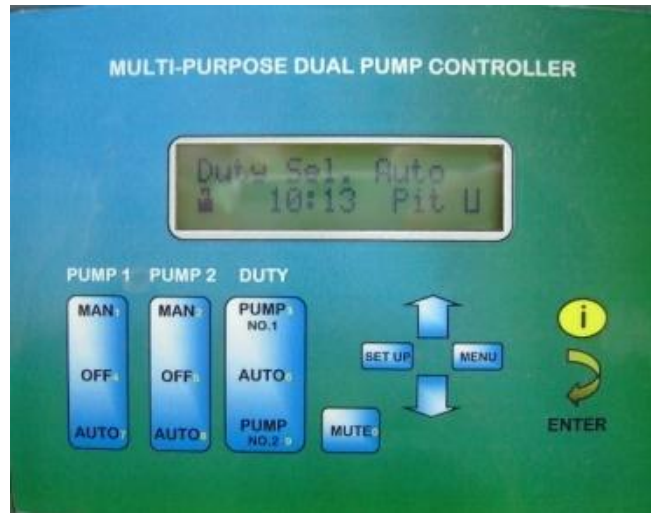
A.B.N 54 131 353 636

Phone: (02) 9675 3815

Fax: (02) 9675 1381

Email: sales@incacontrol.com.au

MPJ2 Dual & MPJ3 Triplex Pump Control panel



Our multi-purpose dual & triplex pump control panel using the Inca MPJ2 or MPJ3 Controller for 3phase up to 11kW 415V & single phase up to 1.5kW 240V (larger on request). The panels can be manufactured in metal (Dual/triplex) or PVC (Dual only) enclosures with inner door. The panels are standard with: -

- Circuit breakers for each pump & control circuit
- Main isolating switch c/w 2nd pole (240V) or 4th pole (415V) for class 1 zone 2 hazardous location
- Extra low voltage floats switch controls. (Usable with 1, 2, 3 or 4 float switches)
- Selectable pump operation (1 float switch Timed standby/high level, Multi float switch Stop/start/standby/high level, Timed alternation/high level, & pressure system)
- Inca model MPJ2 or MPJ3 Controller on front door or inner door c/w indication & control equipment for:
 - Pump running, Pump fail, High level/loss of prime
 - Pit level
 - Manual/off/auto buttons
 - Duty selector buttons
 - Alarm Mute button
 - Each pump total hours run
 - High level/loss of prime
 - Lockable Keypad (selectable)
 - Pump operation type selection
- Audible alarm for each pump fail & high level/loss of prime. Alarm silences after 3minutes & restarts again after 15minutes for 3minutes & continues to cycle until muted as per noise regulation. If alarm has sounded & been muted for one fault a different fault will resound the alarm, which will require its own muting
- Flashing alarm light on panel roof
- All housed in a metal or PVC wall mounted enclosure with inner door.

Part No's

| Type | No of Pumps | Phase 240v or 415v | Pump motor kW |
|---|-------------|--------------------|---------------|
| MPJ | 2 - | 1 or 3 / | To be Listed |
| A dual 415V 2.2kW Sub Soil Panel would be | | | MPJ2-3/2.2 |

MPJ2 (Dual Pump Controls with MPJ2 Controller)

| Part No | Description | Price + GST |
|-------------------------------|---|--------------------|
| Dual 1phase 240V pumps | | |
| MPJ2-1/1.5 | Dual 240 up to 1.5kW | |
| MPJ2-1/1.5-PVC | Dual 240V up to 1.5kW (PVC Enclosure) | |
| Dual 3phase 415V pumps | | |
| MPJ2-3/4 | Dual 415V 3ph up to 4kW | |
| MPJ2-3/7.5 | Dual 415V 3ph 4 to 7.5kW | |
| MPJ2-3/11 | Dual 415V 3ph 7.5 to 11kW | |
| MPJ2-3/4-PVC | Dual 415V 3ph up to 4kW (PVC Enclosure) | |
| MPJ2-3/7.5-PVC | Dual 415V 3ph 4 to 7.5kW (PVC Enclosure) | |
| MPJ2-3/11-PVC | Dual 415V 3ph 7.5 to 11kW (PVC Enclosure) | |

MPJ3 (Triplex Pump Controls with MPJ3 Controller)

| Part No | Description | Price + GST |
|-----------------------------|--------------------|--------------------|
| Triplex 1 phase 240V | | |
| MPJ3-1/1.5 | (up to 1.5kW) | |
| Triplex 3 phase 415V | | |
| MPJ3-3/4 | (up to 4kW) | |
| MPJ3-3/7.5 | (5.5 to 7.5kW) | |
| MPJ3-3/11 | (8kW to 11kW) | |

Optional Extras

| | | Price + GST |
|---------|---|--------------------|
| VFC2 | Volt free contacts for each pump run/each pump fail/high level | |
| VFC3 | Volt free contacts for each pump run/each pump fail/high level | |
| MPJ2IL | Indicating lights for Power on/each pump run/each pump fail/Fault (Dual) | |
| MPJ3IL | Indicating lights for Power on/each pump run/each pump fail/Fault (Triplex) | |
| SSENCL | Panel Housed in a stainless steel enclosure (In lou of metal) | |
| SSENCL3 | Panel Housed in a stainless steel enclosure (In lou of metal) (Triplex) | |
| GSM AJ | Provide GSM Text message alarm | |
| FS-10 | PVC Float switch with 10metre lead (NON Hazardous) | |
| FS-20 | PVC Float switch with 20metre lead (NON Hazardous) | |
| MBK | SS Mounting Bracket (Pack 4) | |

INCA

CONTROL PTY LTD

14/62 OWEN ST GLENDENNING NSW 2761

A.B.N 54 131 353 636

Phone: (02) 9675 3815

Fax: (02) 9675 1381

Email: sales@incacontrol.com.au

MPJA2 Dual & MPJA3 Triplex Pump Control panel



Our multi-purpose dual & triplex analogue controlled pump control panel using the Inca MPJA2 or MPJA3 Controller for 3phase up to 11kW 415V & single phase up to 1.5kW 240V (larger on request). The panels can be manufactured in metal (Dual/triplex) or PVC (Dual only) enclosures with inner door. The panels are standard with: -

- Circuit breakers for each pump & control circuit
- Main isolating switch c/w 2nd pole (240V) or 4th pole (415V) for class 1 zone 2 hazardous location
- Extra low voltage floats switch controls. (Usable with 1, 2, 3 or 4 float switches)
- Selectable pump operation Pump out & pressure system
- Inca model MPJA2 or MPJA3 Controller on inner door c/w indication & control equipment for:
 - Pump running, Pump fail, High level/loss of prime
 - Pit level or system pressure
 - Manual/off/auto buttons
 - Duty selector buttons
 - Alarm Mute button
 - Each pump total hours run
 - High level/loss of prime
 - Lockable Keypad (selectable)
 - Pump operation type selection
 - Fully adjustable level & pressure start/stop & alarm
- Audible alarm for each pump fail & high level/loss of prime. Alarm silences after 3minutes & restarts again after 15minutes for 3minutes & continues to cycle until muted as per noise regulation. If alarm has sounded & been muted for one fault a different fault will resound the alarm, which will require its own muting
- Flashing alarm light on panel roof
- All housed in a metal or PVC wall mounted enclosure with inner door.

Part No's

| Type | No of Pumps | Phase 240v or 415v | Pump motor kW |
|------|-------------|--------------------|---------------|
| MPJA | 2 - | 1 or 3 / | To be Listed |

A dual 415V 2.2kW Sub Soil Panel would be MPJA2-3/2.2

MPJA2 (Dual Pump Controls with MPJ2 Controller)

| Part No | Description | Price + GST |
|-------------------------------|---|--------------------|
| Dual 1phase 240V pumps | | |
| MPJA2-1/1.5 | Dual 240 up to 1.5kW | |
| MPJA2-1/1.5-PVC | Dual 240V up to 1.5kW (PVC Enclosure) | |
| Dual 3phase 415V pumps | | |
| MPJA2-3/4 | Dual 415V 3ph up to 4kW | |
| MPJA2-3/7.5 | Dual 415V 3ph 4 to 7.5kW | |
| MPJA2-3/11 | Dual 415V 3ph 7.5 to 11kW | |
| MPJA2-3/4-PVC | Dual 415V 3ph up to 4kW (PVC Enclosure) | |
| MPJA2-3/7.5-PVC | Dual 415V 3ph 4 to 7.5kW (PVC Enclosure) | |
| MPJA2-3/11-PVC | Dual 415V 3ph 7.5 to 11kW (PVC Enclosure) | |

MPJA3 (Triplex Pump Controls with MPJ3 Controller)

| Part No | Description | Price + GST |
|-----------------------------|--------------------|--------------------|
| Triplex 1 phase 240V | | |
| MPJA3-1/1.5 | (up to 1.5kW) | |
| Triplex 3 phase 415V | | |
| MPJA3-3/4 | (up to 4kW) | |
| MPJA3-3/7.5 | (5.5 to 7.5kW) | |
| MPJA3-3/11 | (8kW to 11kW) | |

Required Extras

| | |
|-----------|--|
| LTS2.5/10 | 2.5mt level transducer c/w 10metre lead (Stormwater/Sewage Pits) |
| LTS10/10 | 10mt level transducer c/w 10metre lead (Stormwater/Sewage Pits) |
| PT10 | 0-1000kpa Pressure transducer (Pressure system) |
| PT25 | 0-2500kpa Pressure transducer (Pressure system) |

Optional Extras

| | Price + GST |
|---------|---|
| VFC2 | Volt free contacts for each pump run/each pump fail/high level |
| VFC3 | Volt free contacts for each pump run/each pump fail/high level |
| MPJ2IL | Indicating lights for Power on/each pump run/each pump fail/Fault (Dual) |
| MPJ3IL | Indicating lights for Power on/each pump run/each pump fail/Fault (Triplex) |
| SSENCL | Panel Housed in a stainless steel enclosure (In lou of metal) |
| SSENCL3 | Panel Housed in a stainless steel enclosure (In lou of metal) (Triplex) |
| GSM AJ | Provide GSM Text message alarm |
| MBK | SS Mounting Bracket (Pack 4) |

INCA

CONTROL PTY LTD

14/62 OWEN ST GLENDENNING NSW 2761

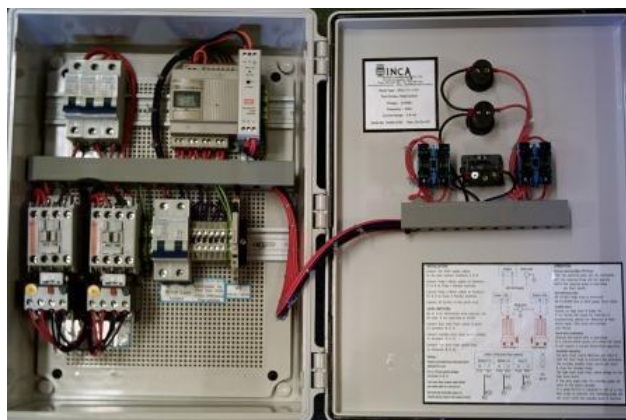
A.B.N 54 131 353 636

Phone: (02) 9675 3815

Fax: (02) 9675 1381

Email: sales@incacontrol.com.au

SPC2 & 3 Dual & Triplex Pump Out (Basic) Control Panel



Our base model dual pump out control panel for 3phase up to 11kW 415V (larger on request) & single phase up to 1.5kW 240V. Standard sizes are 0.75kW, 1.5kW, 2.2kW 3phase, & 0.4kW, 0.8kW, 1.1kW for single phase. The panels are standard with: -

- Circuit breakers for each pump & control circuit
- Automatic alternation after each pump operation
- Manual/off/auto selector switch for each pump
- Main isolating switch c/w 2nd pole (240V) & 4th pole (415V) for class 1 zone 2 hazardous location
- Extra low voltage float switch controls
- Indicating light located on front door for Pump fail / High level
- Audible alarm & mute push button for each pump fail & high level. Alarm silences after 5minutes & restarts again after 15minutes as per noise regulation. If alarm has sounded & been muted for one fault a different fault will resound the alarm which will require its own muting
- Common voltage free contact for pump fail & high level
- All housed in an ABS wall mounted enclosure PVC weatherproof for Dual Systems only or metal for Dual & Triplex. IP55. NO inner door. 300W x 400H x 160D

Part No's

| Type | No of Pumps | | Phase 240 or 415V | Pump motor size | Revision |
|------|-------------|---|-------------------|-----------------|----------|
| SPC | 2 | - | 1 or 3 | / To be listed | PVC |

A dual 240V 0.8kW pump out panel would be SPC2-1/0.8-PVC (Please advise motor FLC)

SPC2 (Dual Pump out Controls)

| Part No | Description | Price + GST |
|-------------------------------|---------------------------------|--------------------|
| Dual 1phase 240V pumps | | |
| SPC2-1/1.5 | Dual 240V 1ph up to 1.5kW | |
| SPC2-1/1.5-PVC | Dual 240V 1ph up to 1.5kW (PVC) | |
| Dual 3phase 415V pumps | | |
| SPC2-3/4 | Dual 415V 3ph up to 4kW | |
| SPC2-3/7.5 | Dual 415V 3ph 4 to 7.5kW | |
| SPC2-3/11 | Dual 415V 3ph 7.5 to 11kW | |
| SPC2-3/4-PVC | Dual 415V 3ph up to 4kW (PVC) | |
| SPC2-3/7.5-PVC | Dual 415V 3ph 4 to 7.5kW (PVC) | |
| SPC2-3/11-PVC | Dual 415V 3ph 7.5 to 11kW (PVC) | |

SPC3 (Triplex Pump out Controls)

| Part No | Description | Price + GST |
|----------------------------------|------------------------------|--------------------|
| Triplex 1phase 240V pumps | | |
| SPC3-1/1.5 | Triplex 240V 1ph up to 1.5kW | |
| Triplex 3phase 415V pumps | | |
| SPC3-3/4 | Triplex 415V 3ph up to 4kW | |
| SPC3-3/7.5 | Triplex 415V 3ph 4 to 7.5kW | |
| SPC3-3/11 | Triplex 415V 3ph 7.5 to 11kW | |

Optional Extras

| | | Price + GST |
|-------|--|--------------------|
| VFC2 | Volt free contacts for each pump run/each pump fail/high level | |
| WPMB | Panel fitted inside weatherproof & vandal proof meter box | |
| RFL | Flashing light on panel roof | |
| RFL-L | Red flashing light loose supplied | |
| FS-10 | PVC Float switch with 10metre lead (NON Hazardous) | |
| FS-20 | PVC Float switch with 20metre lead (NON Hazardous) | |
| MBK | SS Mounting Bracket (Pack 4) | |

INCA

CONTROL PTY LTD

14/62 OWEN ST GLENDENNING NSW 2761

A.B.N 54 131 353 636

Phone: (02) 9675 3815

Fax: (02) 9675 1381

Email: sales@incacontrol.com.au

SPSC2 Dual Pump Out Control Panel

Our dual pump out control panel is for 3phase up to 7.5kW 415V & single phase up to 1.5kW 240V (larger on request). Standard sizes are 0.75kW, 1.5kW, 2.2kW 3phase & 0.4kW, 0.8kW, 1.1kW for single phase. The panels are standard with: -

- Circuit breakers for each pump & control circuit
- Automatic alternation after each pump operation
- Main isolating switch c/w 2nd pole (240V) & 4th pole (415V) for class 1 zone 2 hazardous location
- 240V float switch controls
- Indicating light located on front door for high level
- Audible alarm & mute push button for high level
- All housed in a metal or PVC weatherproof enclosure. IP55. NO inner door. 300W x 400H x 150D

Part No's

| <u>Type</u> | <u>No of Pumps</u> | | <u>Phase 240 or 415V</u> | | <u>Pump motor size</u> |
|-------------|--------------------|---|--------------------------|---|------------------------|
| SPSC | 2 | - | 1 or 3 | / | To be listed |

A dual 240V 0.8kW pump out panel would be SPSC2-1/0.8 (Please advise motor FLC)

SPSC2 (Dual Pump out Controls)

| Part No | Description | Price + GST |
|----------------|--------------------|--------------------|
|----------------|--------------------|--------------------|

Dual 1phase 240V pumps

| | | |
|-----------------|---------------------------------|--|
| SPSC2-1/1.5 | Dual 240V 1ph up to 1.5kW | |
| SPSC2-1/1.5-PVC | Dual 240V 1ph up to 1.5kW (PVC) | |

Dual 3phase 415V pumps

| | | |
|-----------------|---------------------------------|--|
| SPSC2-3/4 | Dual 415V 3ph up to 4kW | |
| SPSC2-3/7.5 | Dual 415V 3ph 4 to 7.5kW | |
| SPSC2-3/11 | Dual 415V 3ph 7.5 to 11kW | |
| SPSC2-3/4-PVC | Dual 415V 3ph up to 4kW (PVC) | |
| SPSC2-3/7.5-PVC | Dual 415V 3ph 4 to 7.5kW (PVC) | |
| SPSC2-3/11-PVC | Dual 415V 3ph 7.5 to 11kW (PVC) | |

Optional Extras

Price + GST

| | | |
|-------|--|--|
| VFC2 | Volt free contacts for each pump run/each pump fail/high level | |
| WPMB | Panel fitted inside weatherproof & vandal proof meter box | |
| RFL | Flashing light on panel roof | |
| RFL-L | Red flashing light loose supplied | |
| FS-10 | PVC Float switch with 10metre lead (NON Hazardous) | |
| FS-20 | PVC Float switch with 20metre lead (NON Hazardous) | |
| MBK | SS Mounting Bracket (Pack 4) | |

INCA

CONTROL PTY LTD
 14/62 OWEN ST GLENDENNING NSW 2761
 A.B.N 54 131 353 636

Phone: (02) 9675 3815
Fax: (02) 9675 1381
Email: sales@incacontrol.com.au

PS1 Single Pressure System Pump Control panel

Our single pressure system pump control panel for 3phase up to 11kW 415V & single phase up to 1.5kW 240V (larger on request).

The panels are standard with: -

- Circuit breakers for pump/isolator & control circuit
- Manual/off/auto selector switch
- Main isolating switch
- All housed in a PVC weatherproof enclosure.

Part No's

| <u>Type</u> | <u>No of Pumps</u> | <u>Phase 240V or 415V</u> | <u>Pump motor kW size</u> | <u>(Advise Type of System)</u> |
|-------------|--------------------|---------------------------|---------------------------|--------------------------------|
| PS | 1 | - | 1 or 3 / | To be Listed (Pressure, etc) |

A single 415V 2.2kW Pressure System Panel would be PS1-3/2.2 (Pressure System)

Our alternative single pressure system pump control panel for 3phase up to 11kW 415V, & single phase up to 1.5kW 240V, larger on request, the panels are standard with: -

- Circuit breakers for pump/isolator & control circuit
- Manual/off/auto selector switch
- Minimum run timer
- Main isolating switch
- Low discharge pressure pump shutdown
- Indicating lights for

| | |
|--------------|---------|
| Power on | (1-off) |
| Pump runs | (1-off) |
| Pump fail | (1-off) |
| Low pressure | (1-off) |
- All housed in a PVC weatherproof enclosure.

Extras

VFCP1 Volt free contacts for pump run/each pump fail/Low pressure
 PS02 To fit Pump fail audible alarm & mute push button
 HRM Hour run meters for each pump
 LLR Low level alarm & pump shutdown

Part No's

| <u>Type</u> | <u>No of Pumps</u> | <u>Phase</u> | <u>Pump motor size</u> | <u>Options</u> |
|-------------|--------------------|--------------|------------------------|-------------------|
| PS | 1 | -1 or 3 / | To be Listed | A (Pressure, etc) |

An alternative single 415V 2.2kW Pressure System Panel would be PS1-3/2.2-A (Pressure System)

PS1 (Single Pressure System)

| Part No | Description | Price + GST |
|----------------|--------------------|------------------------|
|----------------|--------------------|------------------------|

Single Pump 1 phase 240V

| | | |
|-------------|---|--|
| PS1-1/1.5 | (up to 1.5kW) | |
| PS1-1/1.5-A | (up to 1.5kW with lights/Low press/min run timer) | |

Single Pump 3 phase 415V

| | | |
|-------------|--|--|
| PS1-3/4 | (up to 4kW) | |
| PS1-3/4-A | (up to 1.5kW with lights/Low press/min run timer) | |
| PS1-3/7.5 | (5.5-7.5kW) | |
| PS1-3/7.5-A | (5.5 to 7.5kW with lights/Low press/min run timer) | |
| PS1-3/11 | (8-11kW) | |
| PS1-3/11-A | (8-11kW with lights/Low press/min run timer) | |

Optional Extras

Price + GST

| | | |
|-------|---|--|
| PS01 | To fit Pump fail audible alarm & mute push button | |
| HRM | Hour Run Meter | |
| LLR | Low level pump shutdown & indicating light | |
| VFCP1 | Voltage Free contacts for pump run/pump fail/Low pressure | |
| MBK | SS Mounting Bracket (Pack 4) | |

INCA

CONTROL PTY LTD

14/62 OWEN ST GLENDENNING NSW 2761

A.B.N 54 131 353 636

Phone: (02) 9675 3815

Fax: (02) 9675 1381

Email: sales@incacontrol.com.au

RWPS1 Single Rainwater Pressure System Pump Control Panel

Our single pressure system pump control panel is for single phase up to 1.1kW 240V.

The panels are standard with: -

- Circuit breakers for pump/isolator & control circuit
- Indicating lights for Mains Water/Tank Water
- Terminals for controls & mains water solenoid
- Mains water solenoid operated on tank low level
- All housed in a PVC weatherproof enclosure.

Part No's

RWPS1-1

RWPS1 (Single Rainwater Pressure System)

| <i>Part No</i> | <i>Description</i> | <i>Price +</i> |
|---------------------------------|--|----------------|
| <i>GST</i> | | |
| Single Pump 1 phase 240V | | |
| RWPS1-1 | up to 1.5kW | |
| RWPS1-1/LDP | Single Rainwater with Low Pressure | |
| RWPS1-1/VFC | Single Rainwater with Volt Free Contacts | |
| MBK | SS Mounting Bracket (Pack 4) | |

INCA

CONTROL PTY LTD

14/62 OWEN ST GLENDENNING NSW 2761

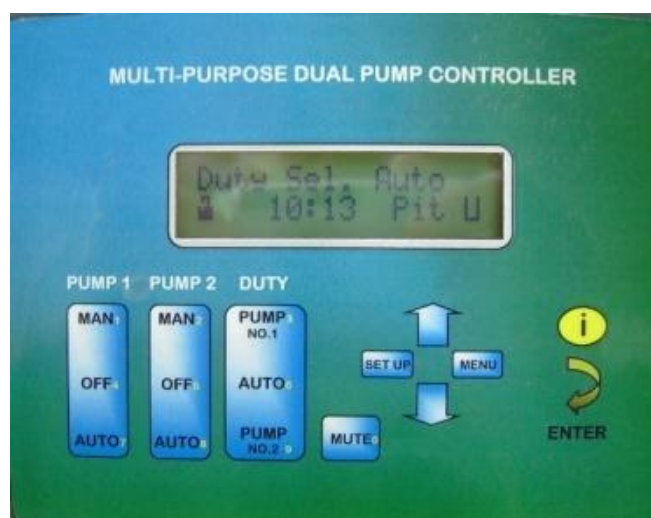
A.B.N 54 131 353 636

Phone: (02) 9675 3815

Fax: (02) 9675 1381

Email: sales@incacontrol.com.au

RPJ2 Dual & RPJ3 Triplex Pump Control panel



Our Rainwater dual & triplex pump control panel using the Inca RPJ2 or RPJ3 Controller for 3phase up to 11kW 415V & single phase up to 1.5kW 240V (larger on request). The panels can be manufactured in metal enclosures. The panels are standard with: -

- Circuit breakers for each pump & control circuit
- Main isolating switch
- Extra low voltage floats switch controls or constant pressure control
- Selectable pump operation pressure switches/pressure transducer
- Selectable level display float switch/level transducer
- Inca model RPJ2 or RPJ3 Controller on front door c/w indication & control equipment for:
 - Pump running, Pump fail, loss of prime
 - Tank level
 - Manual/off/auto buttons
 - Duty selector buttons
 - Alarm Mute button
 - Each pump total hours run
 - Loss of prime
 - Lockable Keypad (selectable)
 - Mains water/tank water in operation
- Audible alarm for each pump fail & high level/loss of prime. Alarm silences after 3minutes & restarts again after 15minutes for 3minutes & continues to cycle until muted as per noise regulation. If alarm has sounded & been muted for one fault a different fault will resound the alarm, which will require its own muting
- Flashing alarm light on panel roof
- All housed in a metal wall mounted enclosure.

Part No's

| Type | No of Pumps | Phase 240v or 415v | Pump motor kW |
|------|-------------|--------------------|---------------|
| RPJ | 2 - | 1 or 3 / | To be Listed |

A dual 415V 2.2kW Rain water Panel would be

RPJ2-3/2.2

RPJ2 (Dual Pump Controls with RPJ2 Controller)

| Part No | Description | Price + GST |
|-------------------------------|---------------------------|--------------------|
| Dual 1phase 240V pumps | | |
| RPJ2-1/1.5 | Dual 240 up to 1.5kW | |
| Dual 3phase 415V pumps | | |
| RPJ2-3/4 | Dual 415V 3ph up to 4kW | |
| RPJ2-3/7.5 | Dual 415V 3ph 4 to 7.5kW | |
| RPJ2-3/11 | Dual 415V 3ph 7.5 to 11kW | |

RPJ3 (Triplex Pump Controls with RPJ3 Controller)

| Part No | Description | Price + GST |
|-----------------------------|--------------------|--------------------|
| Triplex 1 phase 240V | | |
| RPJ3-1/1.5 | (up to 1.5kW) | |
| Triplex 3 phase 415V | | |
| RPJ3-3/4 | (up to 4kW) | |
| RPJ3-3/7.5 | (5.5 to 7.5kW) | |
| RPJ3-3/11 | (8kW to 11kW) | |

Optional Extras

| | | Price + GST |
|-----------|---|--------------------|
| VFC2 | Volt free contacts for each pump run/each pump fail/high level | |
| VFC3 | Volt free contacts for each pump run/each pump fail/high level | |
| RPJ2IL | Indicating lights for Power on/each pump run/each pump fail/Fault (Dual) | |
| RPJ3IL | Indicating lights for Power on/each pump run/each pump fail/Fault (Triplex) | |
| SSENCL | Panel Housed in a stainless steel enclosure (In lou of metal) | |
| SSENCL3 | Panel Housed in a stainless steel enclosure (In lou of metal) (Triplex) | |
| GSM AJ | Provide GSM Text message alarm | |
| FS-10 | PVC Float switch with 10metre lead (NON Hazardous) | |
| FS-20 | PVC Float switch with 20metre lead (NON Hazardous) | |
| MBK | SS Mounting Bracket (Pack 4) | |
| LTS2.5/10 | 2.5mt level transducer c/w 10metre lead (Stormwater/Sewage Pits) | |
| LTS10/10 | 10mt level transducer c/w 10metre lead (Stormwater/Sewage Pits) | |
| PT10 | 0-1000kpa Pressure transducer (Pressure system) | |
| PT25 | 0-2500kpa Pressure transducer (Pressure system) | |

INCA

CONTROL PTY LTD

14/62 OWEN ST GLENDENNING NSW 2761

A.B.N 54 131 353 636

Phone: (02) 9675 3815

Fax: (02) 9675 1381

Email: sales@incacontrol.com.au

PVRW1 Variable Speed Pressure System Control panel (Single Pump For Rain Water Systems)

Our single variable speed drive Rain Water Pressure system pump control panels are designed for ease of set up & operation for the end user. They provide power savings against full a speed pump system as a small reduction in pump speed and provides a large reduction in power drawn. The panels are standard with: -

- Circuit breakers for pump & control circuit
- Main isolating switch
- Variable frequency inverter (1-off) housed inside panel c/w required fan cooling.
- Indicating lights for

| | |
|----------------|---------|
| VSD Fault | (1-off) |
| Mains Water On | (1-off) |
| Tank Water On | (1-off) |
- Voltage free contacts for each VSD fault/Mains Water on
- Terminals for 24VAC mains water solenoid standard
- 0-1000kpa pressure transducer fitted to base of panel (Larger on request)
- All housed in a metal wall mounted enclosure IP54

Part No's

| Type | No of Pumps | Phase 240V or 415V | Pump motor kW size |
|-------------------------|-------------|--------------------|--------------------|
| <u>Solenoid Voltage</u> | | | |
| PVRW | 1 | 1 or 3 / | To be Listed |
| | | | 240V or 24VAC |

A 415V 2.2kW VSD Rainwater Pressure system would be PVRW1-3/2.2

Please confirm whether 24v or 240v solenoid

PVRW1

| | | |
|----------------|--------------------|--------------------|
| Part No | Description | Price + GST |
|----------------|--------------------|--------------------|

Single 1 phase 240V supply, 240V 3phase pumps

| | |
|--------------|---------------------------------------|
| PVRW1-1/0.75 | (up to 0.75kW 240V Max Current 4.2A) |
| PVRW1-1/1.5 | (0.75 to 1.5kW 240V Max Current 7.5A) |
| PVRW1-1/2.2 | (1.5 to 2.2kW 240V Max Current 11A) |

Single 3 phase 415V pumps

| | |
|--------------|---------------------------------------|
| PVRW1-3/0.75 | (up to 0.75kW 415V Max Current 2.5A) |
| PVRW1-3/1.5 | (0.75 to 1.5kW 415V Max Current 4.2A) |
| PVRW1-3/2.2 | (2.2kW 415V Max Current 5.5A) |
| PVRW1-3/4 | (3 up to 4kW 415V Max Current 8.2A) |
| PVRW1-3/5.5 | (5.5kW 415V Max Current 13A) |
| PVRW1-3/7.5 | (7.5kW 415V Max Current 18A) |
| PVRW1-3/11 | (11kW 415V Max Current 24A) |

Optional Extras

| | |
|-------|--|
| FS-10 | PVC Float switch with 10metre lead (NON Hazardous) |
| FS-20 | PVC Float switch with 20metre lead (NON Hazardous) |
| MBK | SS Mounting Bracket (Pack 4) |

INCA

CONTROL PTY LTD

14/62 OWEN ST GLENDENNING NSW 2761
A.B.N 54 131 353 636

Phone: (02) 9675 3815
Fax: (02) 9675 1381
Email: sales@incacontrol.com.au

PVJ1 Variable Speed Pressure System Control panel (Single Pump)

Our single variable speed drive pressure system pump control panels are designed for ease of set up & operation for the end user. They provide power saving against full speed pump system as a small reduction in pump speed provides a large reduction in power drawn. The JAZZ HMI displays the system pressure along with control switch manual off auto selector positions. Panels can be manufactured with tank level monitoring & bypass or makeup valve controls. The panels are standard with: -

- Circuit breakers for pump & control circuit
- Main isolating switch
- Variable frequency inverters housed inside panel c/w required fan cooling
- Inca model JAZZ HMIPLC c/w with display of
 - System Pressure
 - Pump status c/w pump speed indication & total hour run for each pump
 - Low discharge pressure indication
 - Manual/off/auto button with manual speed increase & decrease buttons
- 0-1000 kpa pressure transducer fitted to base of enclosure
- Supplied with 2mt Screened motor cable
- All housed in a metal enclosure size to suit motor sizing

Part No's

| <u>Type</u> | <u>No of Pumps</u> | <u>Phase 240v or 415v</u> | <u>Pump motor size</u> | <u>(Advise Type of System)</u> |
|-------------|--------------------|---------------------------|------------------------|--------------------------------|
| PVJ etc) | 1 | 1 or 3 / | To be Listed | (Pressure, Rainwater, etc) |

A Single 415V 2.2kW VSD Pressure system would be PVJ1-3/2.2 (Pressure system)

PVJ1

| <i>Part No</i> | <i>Description</i> | <i>Price + GST</i> |
|--|----------------------|--------------------|
| Single 1 phase 240V supply, 240V 3phase pumps | | |
| PVJ1-1/0.75-PT10 | (up to 0.75kW 240V) | |
| PVJ1-1/1.5-PT10 | (0.75 to 1.5kW 240V) | |
| PVJ1-1/2.2-PT10 | (1.5 to 2.2kW 240V) | |

Single 3 phase 415V pumps**Price + GST**

| | |
|------------------|----------------------|
| PVJ1-3/0.75-PT10 | (up to 0.75kW 415V) |
| PVJ1-3/1.5-PT10 | (0.75 to 1.5kW 415V) |
| PVJ1-3/2.2-PT10 | (2.2kW 415V) |
| PVJ1-3/4-PT10 | (3 up to 4kW 415V) |
| PVJ1-3/5.5-PT10 | (5.5kW 415V) |
| PVJ1-3/7.5-PT10 | (7.5kW 415V) |
| PVJ1-3/11-PT10 | (11kW 415V) |
| PVJ1-3/15-PT10 | (15kW 415V) |
| PVJ1-3/18.5-PT10 | (18.5kW 415V) |
| PVJ1-3/22-PT10 | (22kW 415V) |

Optional Extras**Price + GST**

| | |
|-----------|--|
| PT25 | 0-2500kpa Pressure transducer |
| GSMAJ | Provide GSM Text message alarm |
| VFC1 | Voltage free contacts for Pump run/fail/low pressure |
| LTS2.5/10 | 2.5mt level transducer c/w 10metre lead |
| RWPVJ240 | Rain Water Mains Bypass solenoid controls (240V Solenoid) |
| RWPVJ24 | Rain Water Mains Bypass solenoid controls (24VAC Solenoid) |
| MBK | SS Mounting Bracket (Pack 4) |

Base wiring in your workshop is also available at extra cost

Customising of the above systems to suit your applications

INCA

CONTROL PTY LTD

14/62 OWEN ST GLENDENNING NSW 2761

A.B.N 54 131 353 636

Phone: (02) 9675 3815

Fax: (02) 9675 1381

Email: sales@incacontrol.com.au

PVJ2 & 3 Variable Speed Pressure System Control panel (1 x VSD per Pump)

The dual & triplex JAZZ controlled variable speed drive pressure system pump control panels are designed to maintain a constant system discharge pressure via feedback from the discharge pressure transducer.

The controller has been arranged for ease of set up & operation for the end user. The panels provide power saving against full speed pump system as a small reduction in pump speed provides a large reduction in power drawn. The JAZZ HMI displays the system pressure along with motor speeds. Panels can be manufactured with tank level shutdown & bypass or makeup valve controls.

Both dual & triplex panels are standard with: -

- Circuit breakers
Each pump & the control circuit is protected by a 6kA magnetically operated circuit breaker
- Main isolating switch
A load break isolating switch located inside the control panel for supply termination
- Variable frequency inverters housed within control panel
Each pump is controlled via a variable frequency inverter which ramps the pump motor speed up & down as commanded by the JAZZ HMIPLC controller.
Each VSD has an over-ride switch located within the control panel to manually start & run the VSD to a speed determined by operating the speed adjustment pot on the face of the appropriate drive you have started
- Forced cooling
The control panel is fitted with cooling fans & vents to remove the heat generated by the VSD controllers. The amount of air movement is determined by the enclosure size & amount of heat loss generated by the drive. The calculations are worked out on 40deg ambient & 50 deg internal temperature
- Indicating lights
The control panel has indicating lights that display the status of the control panel including

| | |
|--------------|---|
| Power on | Power is on to the panel |
| Pump run | The selected pump is running |
| Pump fail | The VSD has produced a fault condition for the selected pump |
| System fault | A low discharge pressure of suction tank low level has occurred |
- Manual/off/auto selector switches
Each pump has a Manual/off/auto selector switch with allows operator control of each pump. Selecting manual will operate the selected pump continuously. The pump will ramp up to full speed 100% & remain there until turned off at which time it will ramp down to 0%. (Note: there is no protection for the pump during this operation i.e. low pressure / low level)
Selecting off will not allow the selected pump to operate
Selecting auto will allow the selected pump to be controlled via the Jazz HMIPLC
- Inca model JAZZ HMIPLC

The JAZZ HMIPLC is the brains to the control panel & controls the pump motors in relation to the Pressure Transducer feedback & is PID loop controlled.

The Jazz HMI has an LCD screen displaying 2 lines of text, each of 16 characters, & an operator keyboard of 16 sealed membrane keys

The Jazz HMI displays

- System pressure
- Each pump speed
- Total hour run meters for each pump
- Low discharge pressure shutdown
- Low level suction tank shutdown (if connected)
- Automatic alternation after each pump operation
- Automatic cascading of pumps
- Modulating of all pumps when more than one pump called to run (for smoother operation of system)
- PID loop controlled c/w automatic tuning of loop to system & pump response
- Last 30 fault event logger (Pumps fail/low pressure/low level)

- Voltage free contacts
 - Relay on the terminal strip providing change over contacts for the building monitoring system for
 - Each pump run
 - Each pump fail
 - System fault, Low level/low pressure
- A 0-1000kpa pressure transducer fitted to base of enclosure (other sizes available on request)
- Supplied with 2mt Screened motor cable per pump
- All equipment housed in a metal wall mounted IP54 enclosure size to suit motor sizing

PVJ Pressure System Options

SMS Text messaging dial out alarm (GSMAJ)

Provide SMS messaging for all fault conditions to up to 6 mobile phone numbers

Mains Water Bypass Controls (RWPVJ24)

Provide controls to operate a 24VAC mains water solenoid on power fail/both pumps fail/system fault

Part No’s

| <u>Type</u> | <u>No of Pumps</u> | <u>Phase 240V or 415V</u> | <u>Pump motor kW size</u> | <u>(Advise Type of System)</u> |
|-------------|--------------------|---------------------------|---------------------------|--------------------------------|
| PVJ | 2 or 3 | 1 or 3 / | To be Listed | (Pressure, Rainwater, etc) |

A Dual 415V 2.2kW VSD Pressure system would be PVJ2-3/2.2-PT10 (Pressure system)

PVJ2

| Part No | Description | Price + GST |
|--|----------------------|--------------------|
| Dual 1 phase 240V supply, 240V 3phase pumps | | |
| PVJ2-1/0.75-PT10 | (up to 0.75kW 240V) | |
| PVJ2-1/1.5-PT10 | (0.75 to 1.5kW 240V) | |
| PVJ2-1/2.2-PT10 | (1.5 to 2.2kW 240V) | |
| Dual 3 phase 415V pumps | | |
| PVJ2-3/0.75-PT10 | (up to 0.75kW 415V) | |
| PVJ2-3/1.5-PT10 | (0.75 to 1.5kW 415V) | |
| PVJ2-3/2.2-PT10 | (2.2kW 415V) | |
| PVJ2-3/4-PT10 | (3 up to 4kW 415V) | |
| PVJ2-3/5.5-PT10 | (5.5kW 415V) | |
| PVJ2-3/7.5-PT10 | (7.5kW 415V) | |
| PVJ2-3/11-PT10 | (11kW 415V) | |
| PVJ2-3/15-PT10 | (15kW 415V) | |
| PVJ2-3/18.5-PT10 | (18.5kW 415V) | |
| PVJ2-3/22-PT10 | (22kW 415V) | |

PVJ3***Triplex 1 phase 240V supply, 240V 3phase pumps
GST******Price +***

PVJ3-1/0.75-PT10 (up to 0.75kW 240V)
 PVJ3-1/1.5-PT10 (0.75 to 1.5kW 240V)
 PVJ3-1/2.2-PT10 (1.5 to 2.2kW 240V)

Triplex 3 phase 415V pumps

PVJ3-3/0.75-PT10 (up to 0.75kW 415V)
 PVJ3-3/1.5-PT10 (0.75 to 1.5kW 415V)
 PVJ3-3/2.2-PT10 (2.2kW 415V)
 PVJ3-3/4-PT10 (3 up to 4kW 415V)
 PVJ3-3/5.5-PT10 (5.5kW 415V)
 PVJ3-3/7.5-PT10 (7.5kW 415V)
 PVJ3-3/11-PT10 (11kW 415V)
 PVJ3-3/15-PT10 (15kW 415V)
 PVJ3-3/18.5-PT10 (18.5kW 415V)
 PVJ3-3/22-PT10 (22kW 415V)

Optional Extras***Price + GST***

PT25 0-2500kpa Pressure transducer
 GSMAJ Provide GSM Text message alarm
 RWPVJ240 Rain Water Mains Bypass solenoid controls (240V Solenoid)
 RWPVJ24 Rain Water Mains Bypass solenoid controls (24VAC Solenoid)
 MBK SS Mounting Bracket (Pack 4)

INCA

CONTROL PTY LTD

14/62 OWEN ST GLEN DENNING NSW 2761

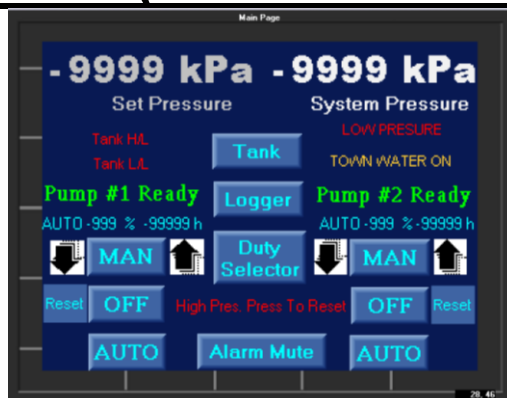
A.B.N 54 131 353 636

Phone: (02) 9675 3815

Fax: (02) 9675 1381

Email: sales@incacontrol.com.au

PV2 & PV3 Variable Speed Pressure System Control panel (2 or 3-off Pumps)



General Graphical Screen Layout

Our dual & triplex variable speed drive pressure system pump control panels are designed for ease of set up & operation for the end user. They provide power saving against full speed pump system as a small reduction in pump speed provides a large reduction in power drawn. The V350 colour touch screen displays the system pressure & set point along with each pump manual off auto selectors. We can easily customise the control system to your requirements & even include your logo within the V350 screen. Panels can be manufactured with up to 6 pump & larger sizes as available. There are 2 types:- Panels with VSD for each pump (PV2 or PV3) & panels with 1 x VSD for duty pump & fixed speed for standby pumps PV1D1 & PV1D2.

The panels are standard with: -

- Circuit breakers for each pump & control circuit
- Automatic alternation after each pump operation
- Main isolating switch
- Variable frequency inverters housed inside panel c/w required fan cooling
- Inca model V350 HMIPLC c/w with display of
 - Pressure set point
 - System pressure
 - Pump status c/w pump speed indication & total hour run for each pump
 - Low discharge pressure indication
 - Manual/off/auto button with manual speed increase & decrease buttons
 - Duty selector buttons for pump out of service operation
 - Screen audible alarm & mute for all fault conditions
 - Automatic pump test facility based on time since last pump run
 - Modulating 1 or both pumps selectable
 - Data logging of all fault conditions up to 5000 logs
 - Graphical trending of system pressure
- Including supply of PT10 Pressure Transducer
- All housed in a metal enclosure size to suit motor sizing

Part No's

| Type | No of Pumps | Phase 240V or 415V | Pump motor size | (Advise Type of System) |
|--|-------------|--------------------|-----------------------------|---------------------------|
| PV | 2 or 3 | 1 or 3 / | To be Listed | (Pressure, Rainwater etc) |
| A dual 415V 2.2kW VSD Pressure system would be | | | PV2-3/2.2 (Pressure system) | |

PV2 & 3 (VSD for each Pump)**PV1D1 & D2 (VSD for duty Pump
& fixed speed on standby Pumps)**

| Part No | Description | Price + GST |
|--|----------------------|--------------------|
| GST | | |
| Dual 1 phase 240V supply, 240V 3phase pumps | | |
| PV2-1/0.75 | (up to 0.75kW 240V) | |
| PV2-1/1.5 | (0.75 to 1.5kW 240V) | |

| Part No | Description | Price + |
|--------------------------------|--------------------|----------------|
| Dual 3 phase 415V pumps | | |
| PV1D1-3/1.5 | (up to 1.5kW 415V) | |
| PV1D1-3/2.2 | (2.2kW 415V) | |
| PV1D1-3/4 | (3 up to 4kW 415V) | |
| PV1D1-3/5.5 | (5.5kW 415V) | |
| PV1D1-3/7.5 | (7.5kW 415V) | |
| PV1D1-3/11 | (11kW 415V) | |

Dual 3 phase 415V pumps

| | |
|------------|----------------------|
| PV2-3/0.75 | (up to 0.75kW 415V) |
| PV2-3/1.5 | (0.75 to 1.5kW 415V) |
| PV2-3/2.2 | (2.2kW 415V) |
| PV2-3/4 | (3 up to 4kW 415V) |
| PV2-3/5.5 | (5.5kW 415V) |
| PV2-3/7.5 | (7.5kW 415V) |
| PV2-3/11 | (11kW 415V) |

Triplex 3phase 415V Pumps

| | |
|-------------|----------------------|
| PV1D2-3/1.5 | (0.75 to 1.5kW 415v) |
| PV1D2-3/2.2 | (2.2kW 415V) |
| PV1D2-3/4 | (2.2 up to 4kW 415V) |
| PV1D2-3/5.5 | (5.5kW 415V) |
| PV1D2-3/7.5 | (7.5kW 415V) |
| PV1D2-3/11 | (11kW 415V) |

Triplex 1 phase 240V supply, 240V 3phase pumps

| | |
|------------|----------------------|
| PV3-1/0.75 | (up to 0.75kW 240V) |
| PV3-1/1.5 | (0.75 to 1.5kW 240V) |

Triplex 3 phase 415V pumps

| | |
|------------|----------------------|
| PV3-3/0.75 | (up to 0.75kW 415V) |
| PV3-3/1.5 | (0.75 to 1.5kW 415V) |
| PV3-3/2.2 | (2.2kW 415V) |
| PV3-3/4 | (2.2 up to 4kW 415V) |
| PV3-3/5.5 | (5.5kW 415V) |
| PV3-3/7.5 | (7.5kW 415V) |
| PV3-3/11 | (11kW 415V) |

Optional Extras**Price + GST**

| | |
|-----------|--|
| PT25 | 0-2500kpa Pressure transducer |
| GSMA | Provide GSM Text message alarm |
| VFC2 | (dual) Voltage free contacts for each Pump run/fail/low pressure |
| VFC3 | (trip) Voltage free contacts for each pump run/fail/low pressure |
| LTS2.5/10 | 2.5mt level transducer c/w 10metre lead (Stormwater/Sewage Pits) |
| RWPVJ240 | Rain Water Mains Bypass solenoid controls (240V Solenoid) |
| RWPVJ24 | Rain Water Mains Bypass solenoid controls (24VAC Solenoid) |
| MBK | SS Mounting Bracket (Pack 4) |

Base wiring in your workshop is also available at extra cost.

Customising of the above systems to suit your applications.

INCA

CONTROL PTY LTD

14/62 OWEN ST GLENDENNING NSW 2761

A.B.N 54 131 353 636

Phone: (02) 9675 3815

Fax: (02) 9675 1381

Email: sales@incacontrol.com.au

PVC2 Variable Speed Pressure System Control panel (Dual Pump)

Our PVC2 dual variable speed drive pressure system pump control panels are designed to operate a system set up that one pump will handle maximum system demand with the second pump as standby on pump overload failure. They are designed for ease of set up & operation for the end user. They provide power saving against full speed pump system as a small reduction in pump speed provides a large reduction in power drawn.

The panels are standard with: -

- Circuit breakers for each pump & control circuit
- Main isolating switch
- Variable frequency inverter (1-off) housed inside panel c/w required fan cooling
- Automatic alternation after each pump operation
- Pump 1/Auto/Pump 2 duty selector
- Indicating lights for

| | |
|-----------|---------|
| Power on | (1-off) |
| Pump run | (2-off) |
| Pump fail | (2-off) |
| VSD fault | (1-off) |
- Controls for mains water bypass solenoid (240V) as standard, 24VAC different part No
- Simple pressure setup by pot adjustment
- Voltage free contacts for each pump run/each pump fault/VSD fault
- 0-1000kpa pressure transducer fitted to base of panel (Larger on request)
- All housed in a metal wall mounted enclosure IP54

Part No's

| Type | No of Pumps | Phase 240V or 415V | Pump motor kW size | Rainwater |
|------|-------------|--------------------|--------------------|-----------------|
| PVC | 2 | 1 or 3 / | To be Listed | RWS240 or RWS24 |

A Dual 415V 2.2kW VSD Rainwater Pressure system would be PVC2-3/2.2-RWS240

PVC2-240V Bypass solenoid

| Part No | Description | Price + GST |
|---|---------------------------------------|--------------------|
| Dual 1 phase 240V supply, 240V 3phase pumps with Controls for 240V Bypass solenoid | | |
| PVC2-1/0.75-RWS240 | (up to 0.75kW 240V Max Current 4.2A) | |
| PVC2-1/1.5-RWS240 | (0.75 to 1.5kW 240V Max Current 7.5A) | |
| PVC2-1/2.2-RWS240 | (1.5 to 2.2kW 240V Max Current 11A) | |

Dual 3 phase 415V pumps with Controls for 240V Bypass solenoid

| | |
|--------------------|---------------------------------------|
| PVC2-3/0.75-RWS240 | (up to 0.75kW 415V Max Current 2.5A) |
| PVC2-3/1.5-RWS240 | (0.75 to 1.5kW 415V Max Current 4.2A) |
| PVC2-3/2.2-RWS240 | (2.2kW 415V Max Current 5.5A) |
| PVC2-3/4-RWS240 | (3 up to 4kW 415V Max Current 8.2A) |
| PVC2-3/5.5-RWS240 | (5.5kW 415V Max Current 13A) |
| PVC2-3/7.5-RWS240 | (7.5kW 415V Max Current 18A) |
| PVC2-3/11-RWS240 | (11kW 415V Max Current 24A) |

PVC2-24VAC Bypass solenoid

| Part No | Description | Price + GST |
|--|--------------------|--------------------|
| Dual 1 phase 240V supply, 240V 3phase pumps with Controls for 24VAC Bypass solenoid | | |

| | |
|-------------------|---------------------------------------|
| PVC2-1/0.75-RWS24 | (up to 0.75kW 240V Max Current 4.2A) |
| PVC2-1/1.5-RWS24 | (0.75 to 1.5kW 240V Max Current 7.5A) |
| PVC2-1/2.2-RWS24 | (1.5 to 2.2kW 240V Max Current 11A) |

Dual 3 phase 415V pumps with Controls for 24VAC Bypass solenoid

| | |
|-------------------|---------------------------------------|
| PVC2-3/0.75-RWS24 | (up to 0.75kW 415V Max Current 2.5A) |
| PVC2-3/1.5-RWS24 | (0.75 to 1.5kW 415V Max Current 4.2A) |
| PVC2-3/2.2-RWS24 | (2.2kW 415V Max Current 5.5A) |
| PVC2-3/4-RWS24 | (3 up to 4kW 415V Max Current 8.2A) |
| PVC2-3/5.5-RWS24 | (5.5kW 415V Max Current 13A) |
| PVC2-3/7.5-RWS24 | (7.5kW 415V Max Current 18A) |
| PVC2-3/11-RWS24 | (11kW 415V Max Current 24A) |

Optional Extras

| | | |
|-------|--|--------------------|
| FS-10 | PVC Float switch with 10metre lead (NON Hazardous) | Price + GST |
| FS-20 | PVC Float switch with 20metre lead (NON Hazardous) | |
| MBK | SS Mounting Bracket (Pack 4) | |

Note:

Please ensure pump motor current is not larger than the current rating displayed. The next size up must be selected if current larger than listed above.

INCA

CONTROL PTY LTD

14/62 OWEN ST GLENDENNING NSW 2761

A.B.N 54 131 353 636

Phone: (02) 9675 3815

Fax: (02) 9675 1381

Email: sales@incacontrol.com.au

HWC24 Hot Water Circulating Pump Control Panel

Our HWC24 basic 240V dual 24hr alternating pump control panel is designed to provide automatic alternation for a set of circulating pumps to share the operating load & provide the ability to manually select a pump if the other is out of service. There are 3 types of panels: 1-off for small pump with 24hour alternation, 1-off for larger pump above 250W with 24hour alternation & 1-off for small pump with 24hour alternation & pump time clock on/off control. The panel is standard with: -

- Circuit breaker for isolator/control
- Pump selector switch (Pump 1/Auto/Pump 2)
- 7 day 100hour battery backup time clock
- Terminals for pump connection
- Terminals for optional thermostat connection
- All housed in a PVC weatherproof enclosure

Stock HWCP panels

| Part No | Description | PRICE |
|-----------------|--|--------------|
| PRICE10+ | | |
| HWC24-PVC | Dual HWCP 250W Max controls with 24hr alternation | |
| HWC24/1-PVC | Dual HWCP 370W & up controls with 24hr alternation | |
| HWC24-2CH-PVC | Dual HWC 250W Max controls with 24hr alternation pump on/off | |
| TCB | Time Clock in PVC Box | |

Optional Extras

| | |
|-------|--|
| TH/W | Supply & wire to clamp on thermostat 1metre lead |
| HWTHW | Supply thermostat & wire to UPS20-60B with 1metre lead including 3 pin plug & lead for supply & 1 metre lead to thermostat |
| MBK | SS Mounting Bracket (Pack 4) |

INCA

CONTROL PTY LTD

14/62 OWEN ST GLENDENNING NSW 2761

A.B.N 54 131 353 636

Phone: (02) 9675 3815

Fax: (02) 9675 1381

Email: sales@incacontrol.com.au

HWC2 Dual Hot Water Circulating Pump Control panel

Our HWC2 dual Hot Water Circulating pump control panel is for 3phase up to 7.5kW 415V & single phase up to 1.5kW 240V (larger on request). The panels are standard with: -

- Circuit breakers for each pump & control circuit
- 24hr Automatic alternation
- Pump selector switch
- Main isolating switch
- Terminals for optional thermostat control
- Indicating lights located on front door for:

| | |
|-----------|---------|
| Power on | (1-off) |
| Pump run | (2-off) |
| Pump fail | (2-off) |
- Volt free contacts for each pump run/each pump fail
- All housed in a metal or PVC weatherproof enclosure. IP55: 400W x 400H x 150D

Part No's

| <u>Type</u> | <u>No of Pumps</u> | <u>Phase 240V or 415V</u> | <u>Pump motor kW size</u> | <u>Wired on Base</u> |
|-------------|--------------------|---------------------------|---------------------------|----------------------|
| HWC | 2 - | 1 or 3 / | To be Listed | W |

A dual 415V 1.5kW Hot Water Circulating pumps would be HWC2-3/1.5W

HWC2 (Dual Hot Water Circulating Pump Controls)

| Part No | Description | Price + GST |
|-------------------------------|---------------------------------|--------------------|
| Dual 1phase 240V pumps | | |
| HWC2-1/1.5 | Dual 240V 1ph up to 1.5kW | |
| HWC2-1/1.5-PVC | Dual 240V 1ph up to 1.5kW (PVC) | |

| | | |
|-------------------------------|-------------------------------------|--|
| Dual 3phase 415V pumps | | |
| HWC2-3/4 | Dual 415V 3ph up to 4kW | |
| HWC2-3/4-PVC | Dual 415V 3ph up to 4kW (PVC) | |
| HWC2-3/7.5 | Dual 415V 3ph 5.5 up to 7.5kW | |
| HWC2-3/7.5-PVC | Dual 415V 3ph 5.5 up to 7.5kW (PVC) | |

Optional Extras

| | |
|-------|---|
| SSENC | Panel Housed in a stainless steel enclosure (In lou of metal) |
| WPMB | Panel fitted inside weatherproof & vandal proof meter box |
| RFL | Flashing light on panel roof |
| RFL-L | Red flashing light loose supplied |
| HRM2 | Hours run meters for each pump |
| MBK | SS Mounting Bracket (Pack 4) |

NOTE

Base wiring is in our workshop. There is an extra cost if carried out in your workshop.

INCA

CONTROL PTY LTD

14/62 OWEN ST GLENDENNING NSW 2761

A.B.N 54 131 353 636

Phone: (02) 9675 3815

Fax: (02) 9675 1381

Email: sales@incacontrol.com.au

BP1 Single Bore Pump Control panel

Our standard model single Bore pump control panel for 3phase up to 7.5kW 415V & single phase up to 1.5kW 240V (larger on request).

The panels are standard with: -

- Circuit breakers for pump/isolator & control circuit
- Manual/off/auto selector switch
- Main isolating switch
- Terminals for control via remote float switch (240V)
- Lightning protection on the supply using varistors
- Low bore level pump shutdown via probe relay (probes not included)
- Indicating lights for

| | |
|----------------|---------|
| Power on | (1-off) |
| Pump Runs | (1-off) |
| Pump fail | (1-off) |
| Low Bore Level | (1-off) |
- All housed in a PVC weatherproof enclosure. (Lights & switches on front)

Part No's

| Type | No of Pumps | Phase 240V or 415V | Pump motor kW |
|------|-------------|--------------------|---------------|
| BP | 1 - | 1 or 3 / | To be Listed |

A single 415V 2.2kW Bore Pump Panel would be BP1-3/2.2

BP1 (Single Bore Pump controls)

| | | |
|----------------|--------------------|--------------------|
| Part No | Description | Price + GST |
|----------------|--------------------|--------------------|

Single Pump 1 phase 240V

BP1-1/1.5 (up to 1.5kW)

Single Pump 3 phase 415V

BP1-3/4 (up to 4kW)

BP1-3/7.5 (5.5-7.5kW)

Optional Extras

| | |
|-------|---|
| VFCB1 | Voltage Free contacts for pump run/pump fail/high level |
| WPMB | Panel fitting inside weatherproof & vandal proof meterbox |
| RFL | Red flashing light mounted on panel roof |
| RFL-L | Loose supply Red flashing light |
| HRM | Hour Run Meter |
| BPALM | Audible alarm & mute for pump fail & low bore level |
| MBK | SS Mounting Bracket (Pack 4) |
| 11SN1 | Bore level probe (No cable) Cable extra cost |
| | Cable cost per metre per probe |

INCA

CONTROL PTY LTD

14/62 OWEN ST GLENDENNING NSW 2761

A.B.N 54 131 353 636

Phone: (02) 9675 3815

Fax: (02) 9675 1381

Email: sales@incacontrol.com.au

FPC12D & FPC24D Diesel Fire Pump Control Panel



Our Diesel fire pump control panels can be supplied for either 12V or 24V engines. The panels are manufactured to comply with AS2941 & are supplied with 2 starting solenoids rated at 100A Continuous (600A for 30seconds)

The panels are standard with:-

- Circuit breakers for each battery & engine instruments
- Comply to AS2941/2008
- Terminals to connect 240V 16A Jacking pump (standard on all panels)
- Battery charger for each battery with battery charger fail output
- Engine starting solenoids for manual & starting battery
- Engine instruments are located on panel facia
- Inca HE-XE102 HMIPLC located on panel facia to control starting cycle, alarm outputs & battery voltage monitoring. Also displaying engine run speed, battery voltages engine hours run, engine oil pressure & engine water or oil temperature. Engine over speed shutdown protection with manual reset including test facility
- Panel indicating lights for 240V supply on/battery voltages low/battery chargers fail/low oil pressure/high engine temperature/pump ready to start/engine fail to start/alarm silenced/engine over speed shutdown
- Local engine stop pushbutton with terminals for remote engine stop
- Audible alarm & mute for engine run & common fault
- Voltage free contacts for FIB for engine run/common fault/power fail
- Loose supply of oil pressure sender, oil or water temperature sender (type to be advised)
- Circuit diagrams for panel, engine harness wiring & manual for tacho set up
- All housed in a metal painted enclosure 600mmH x 600mmW x 200mmD

| Part No | Description | PRICE (1-9) | PRICE 10+ |
|----------------|-------------------------------------|--------------------|------------------|
| FPC12D-2008 | 12V diesel wiring by others | | |
| FPC12D-2008-L | 12V diesel wired with 2.5metre loom | | |
| FPC24D-2008 | 24V diesel wiring by others | | |
| FPC24D-2008-L | 24V diesel wired with 2.5metre loom | | |

| Optional Extras | PRICE (1-9) | PRICE 10+ |
|------------------------|------------------------------------|------------------|
| FPC-SP | 5/8" Magnet pick up. (Speed Probe) | |
| FPC-FLS | Low Fuel Level Switch | |
| MBK | SS Mounting Bracket (Pack 4) | |

INCA

CONTROL PTY LTD

14/62 OWEN ST GLENDENNING NSW 2761

A.B.N 54 131 353 636

Phone: (02) 9675 3815

Fax: (02) 9675 1381

Email: sales@incacontrol.com.au

FPC Electric Fire Pump Control Panel

Our electric fire pump control panels can be supplied in D.O.L up to 15kW 415V & Star Delta from 15kW up. The panels are manufactured to comply with AS2941.

The panels are standard with:-

- Circuit breakers for monitor battery & alarm
- Comply to AS2941
- Terminals to connect 240V Jacking pump (standard on all panels)
- Battery charger for monitor battery
- D.o.l or star delta starting sized to suit motor
- Indicating lights for
 - Main supply on
 - Main supply fail
 - Pump run
 - Battery charger 240V on
 - Alarm muted
- Audible alarm & mute
- Circuit diagrams for panel
- All housed in a metal painted enclosure sized to suit pump starter sizing

Part No's

| <u>Type</u> | <u>Motor kW</u> | <u>Starting method</u> |
|-------------|-----------------|------------------------|
| FPC | 11 | DOL |

A 55kW star delta electric fire pump controller would be FPC55SD

Part No (Panel Only)

| Type | Description | Price + GST |
|-------------|--------------------|--------------------|
| FPC5.5DOL | 5.5kW DOL | |
| FPC7.5DOL | 7.5kW DOL | |
| FPC11DOL | 11kW DOL | |
| FPC15DOL | 15kW DOL | |
| FPC18.5SD | 18.5kW Star Delta | |
| FPC22SD | 22kW Star Delta | |
| FPC30SD | 30kW Star Delta | |
| FPC37SD | 37kW Star Delta | |
| FPC45SD | 45kW Star Delta | |
| FPC55SD | 55kW Star Delta | |
| FPC75SD | 75kW Star Delta | |
| FPC90SD | 90kW Star delta | |

| | |
|----------|------------------|
| FPC110SD | 110kW Star Delta |
| FPC132SD | 132kW Star Delta |
| FPC160SD | 160kW Star Delta |

Part No (Panel with 2.5metre loom for Main Pump motor & 240V jacking Pump)

| Type | Description | Price + GST |
|-------------|--------------------|--------------------|
| FPC5.5DOL-L | 5.5kW DOL | |
| FPC7.5DOL-L | 7.5kW DOL | |
| FPC11DOL-L | 11kW DOL | |
| FPC15DOL-L | 15kW DOL | |
| FPC18.5SD-L | 18.5kW Star Delta | |
| FPC22SD-L | 22kW Star Delta | |
| FPC30SD-L | 30kW Star Delta | |
| FPC37SD-L | 37kW Star Delta | |
| FPC45SD-L | 45kW Star Delta | |
| FPC55SD-L | 55kW Star Delta | |
| FPC75SD-L | 75kW Star Delta | |
| FPC90SD-L | 90kW Star delta | |
| FPC110SD-L | 110kW Star Delta | |
| FPC132SD-L | 132kW Star Delta | |
| FPC160SD-L | 160kW Star Delta | |

| Optional Extras | Price + GST |
|------------------------|---|
| FO2 | Motor starter c/w overload for 415V up to 4kW Jacking Pump |
| FO2-L | Motor starter c/w overload for 415V up to 4kW Jacking Pump & cable loom for pump & pressure switch |
| FO3 | 240V Jacking Pump Man/Off/Auto selector |
| MBK | SS Mounting Bracket (Pack 4) |